



Phone: +64 9 946 7227 Email: peterandxiaoli@gmail.com
www.peterandxiaoli.com



Auckland – Christchurch 14 days

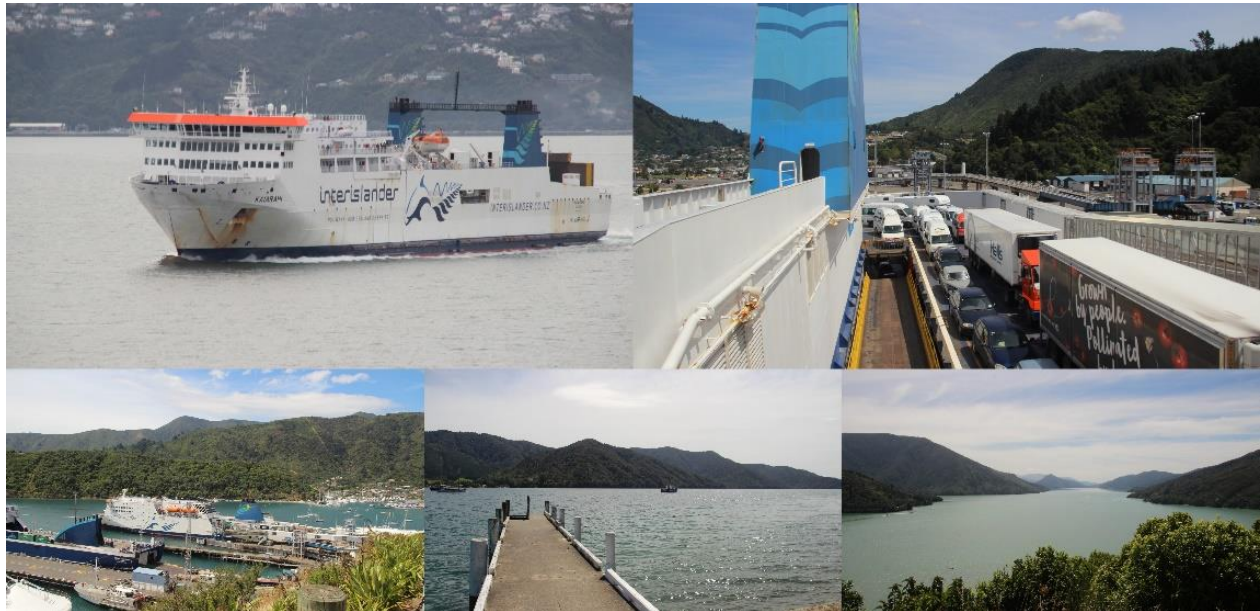
Peter and Xiaoli Tours specialises in boutique tours. Small groups or families and we design each tour to match the budget and brief supplied.

This 14 day tour covers a good cross section of New Zealand. Scenery is diverse and every day changing.

Every tour we photograph the clients and scenery on route. These photographs are supplied complimentary at the conclusion to the customers

Motels listed are subject to booking. If not available a similar standard will be booked.

Activities included in the tour package are listed. Those in red a sample of popular options that could be considered.



Day 4 Wellington to Nelson

Sightsee Wellington then catch the Cook Strait Ferry to the South Island. Drive the picturesque Queen Charlotte Sound Road to Havelock. Then on to Nelson.

Activities – 4 hour ferry crossing included

Motel - Harbourside



Day 5 Nelson to Golden Bay

A relatively short driving day. We will visit Cape Farewell at the northern most point of the South Island. Driving to view the Abel Tasman National Park and the beautiful golden sands that Golden Bay is named after. Several nature walks available. We will visit Te Waikoropupu Springs. The largest cold water springs in the Southern Hemisphere.

Motel - Collingwood Motel Collingwood



Day 6 Golden Bay – Cape Foulwind We leave Golden Bay heading for Cape Foulwind and the seal colony. On the way we will stop at the internationally acclaimed River Café in Murchison. Cape Foulwind itself has a lovely 3km coast walk available past the seal colony and the Cape Foulwind Lighthouse.

Motel – Cape Foulwind Motel.

Day 7 Cape Foulwind to Fox Glacier The road from Cape Foulwind to Fox Glacier is highly rated as one of the most scenic coast routes in the world. We will stop at Punakaki where we will take a 20 minute walk to the famous Pancake Rocks. Then on down to New Zealand Jade Country where we will stop at one of the Greenstone factories. Dependent on day of the week you will see the carvers working their craft. If not, just enjoy the spectacular greenstone shops. From there we keep heading down the west coast to glacier country. Fran Josef and Fox Glacier. There you have the option of doing a short walk to a viewing tower or the longer walk to get closer up.

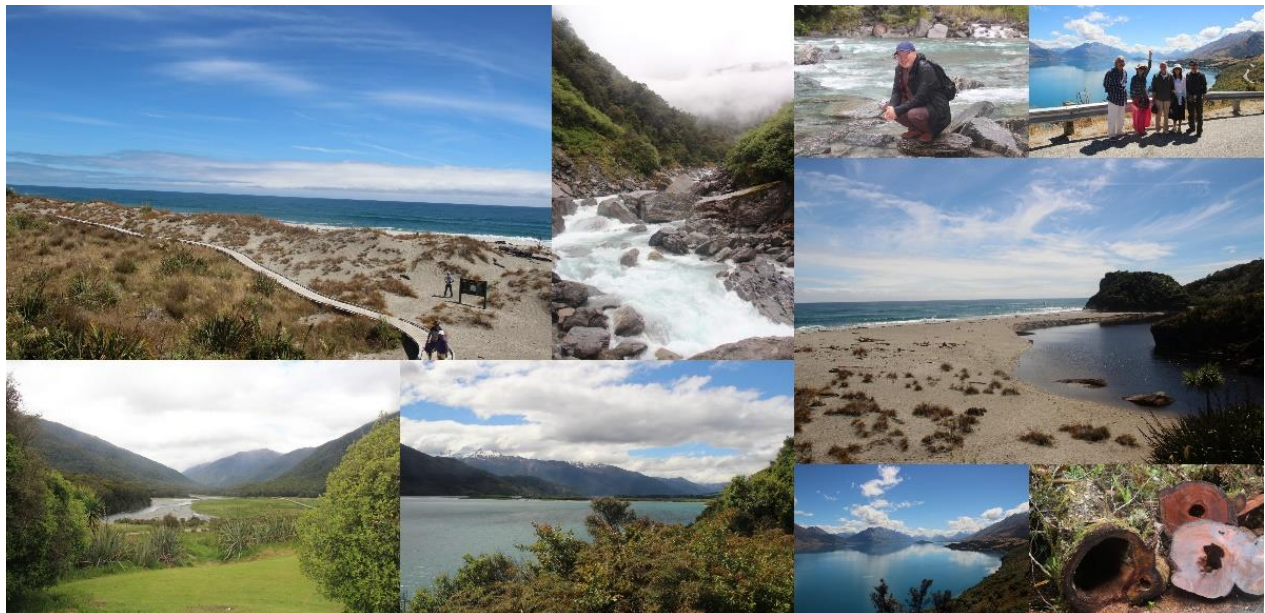
Motel – Mt Cook View Motel Fox Glacier

Optional activity – Helicopter flight over one of the glaciers with option of a glacier landing

Day 8 Fox Glacier to Wanaka

A day of many stops for photography and short walks. An extremely scenic day where we drive through lush green dense bush and the first of 2 world heritage parks. Largely unpopulated.

Motel – Bella Vista Wanaka



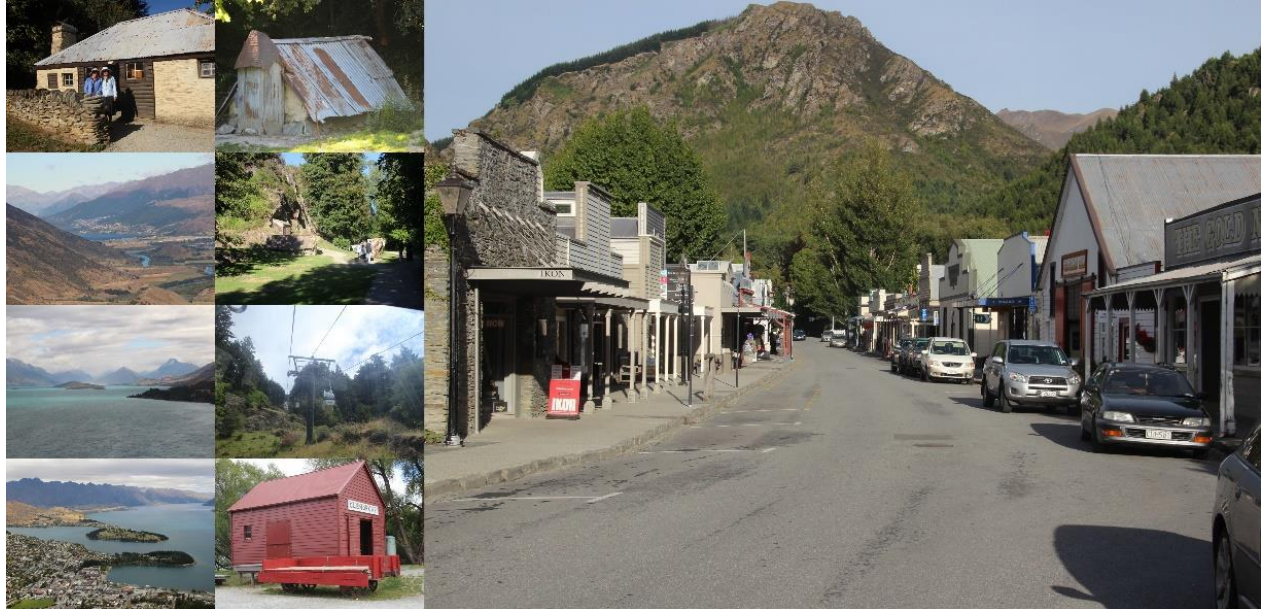
Day 9 Wanaka to Queenstown

A short drive over the Crown Range to Queenstown. Some dramatic photographs looking down over Arrowtown and Queenstown. As we head into Queenstown we will stop Arrowtown and



visit the Chinese heritage gold mining village. Wander through the Arrowtown township before we head into Queenstown.

Motel – Assure Gateway Queenstown (2 nights)



Day 10 Queenstown Based

A day for souvenir shopping. Sightseeing. A day at a leisure pace.

Optional Activities in Queenstown are vast. Jetboating, Bungy Jumping, Sky Diving, Quad Bikes, 4wd Tours to the Lord of the Rings film Set, Lake cruises, Cycle Tracks

A recommended dinner consideration – The Walter Peak Station International BBQ Feast

Day 11 Queenstown to Te Anau

A relatively short 2 hour drive. Te Anau is a beautiful lake. We spend 2 nights Te Anau giving us a whole day the following day to visit Milford Sound.

Motel – Red Tussock Lakeside Motel

Optional Activities – Te Anau Limestone Glow worm Caves

Day 12 Te Anau – Milford – Te Anau

Our favourite day. A highlight of a New Zealand tour. Milford Sound. A day driving to and from through a world heritage park. A cruise on the fiord named Milford Sounds. Not long driving hours but many stops with optional walks. Beautiful lush bush scenery all day. At Milford we board a cruise boat for a 1.5 hour cruise on the Milford Fiord. A spectacular day

Activity Included – Milford Cruise

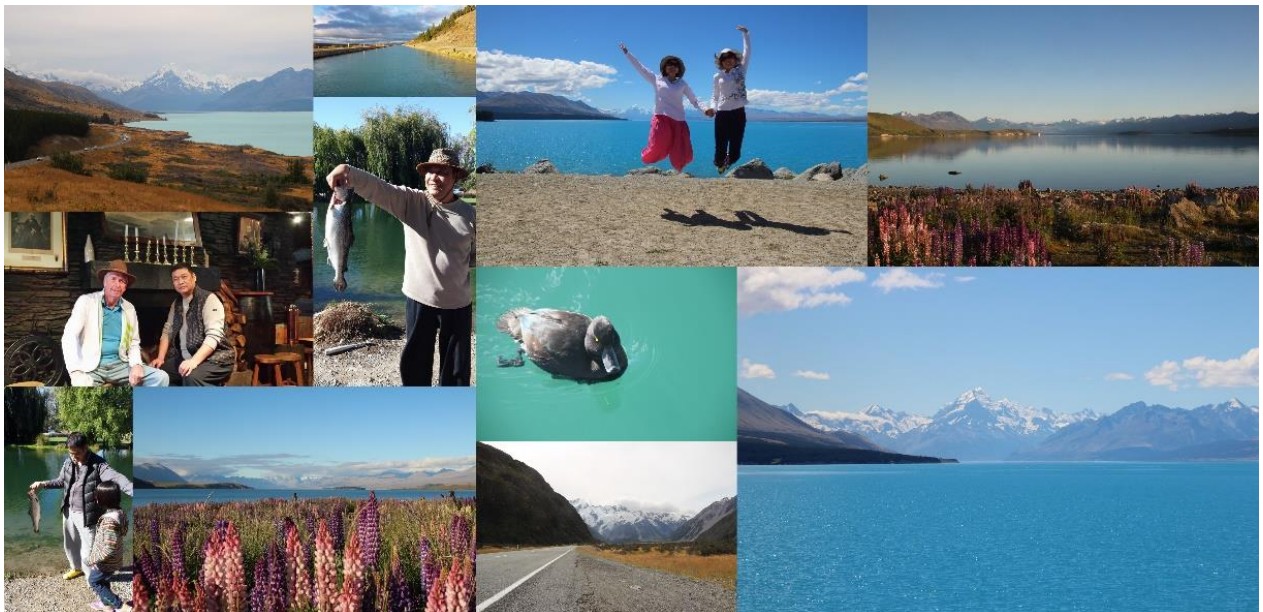


Day 13 Te Anau to Tekapo

We head from Te Anau up to Queenstown and on to Tekapo. A long day in the vehicle. The scenery changing from the lush bush experienced for a number of days now to very barren high country tussock land. We will stop at the High Country Salmon Farm where you can partake in feeding the salmon. We will visit Mt Cook, New Zealand's highest mountain. View the spectacular Lake Pukaki and Lake Tekapo. Brilliant blue with their glacier and mountain waters. Motel – To be advised due to availability

Activity included – High Country Salmon Farm

Optional activity if not already done on the West Coast. A helicopter ride to the glaciers





Day 14 Tekapo to Christchurch

Our final day. A 3 hour drive through to Christchurch. Time permitting before your departure flight we will take a short drive around central Christchurch which was ravaged by 2 major earthquakes. We will visit the NZ Airforce Museum .



Peter and Xiaoli Tours – We tour New Zealand.

A family company. Personal service and with a smile.

North and South Island 14 exquisite days.

