



Phone: +64 9 946 7227 Email: [peterandxiaoli@gmail.com](mailto:peterandxiaoli@gmail.com)  
[www.peterandxiaoli.com](http://www.peterandxiaoli.com)

## 6 day Auckland to Rotorua then Northland



### Day 1 – Auckland to Rotorua.

We do a short sightsee in Auckland around the water front and up One Tree Hill then depart headed for the Waitomo Caves. A world renowned limestone cave complex. From Waitomo we head to Rotorua for a 2 night stay. You will have the option of a stop at Hobbiton, the movie set Motel – BK's Rotorua

Activities Included Waitomo Glow worm Caves

Optional Activity – Polynesian Spa Pools  
Hobbiton Movie Set

### Day 2 Rotorua Region

A visit 9.30am to the farm show at the AgroDome. From there we move on to Te Puia thermal experience. See geysers naturally erupting, boiling mud pools. A thermal experience you will not forget. Photograph the Maori meeting house. Visit the nocturnal Kiwi house and see the live Kiwi.

Activities included - AgroDome Farm Show and Farm Tour



Te Puia Thermal Experience

**Optional Activities**    **Rainbow Springs Nature Reserve – NZ Bird life and fauna**  
**Matai Maori Hangi Feast (evening)**  
**Sky Gondola and Internatiolly renowned restaurant**

**Day 3 Rotorua to Taupo to Auckland North Shore**

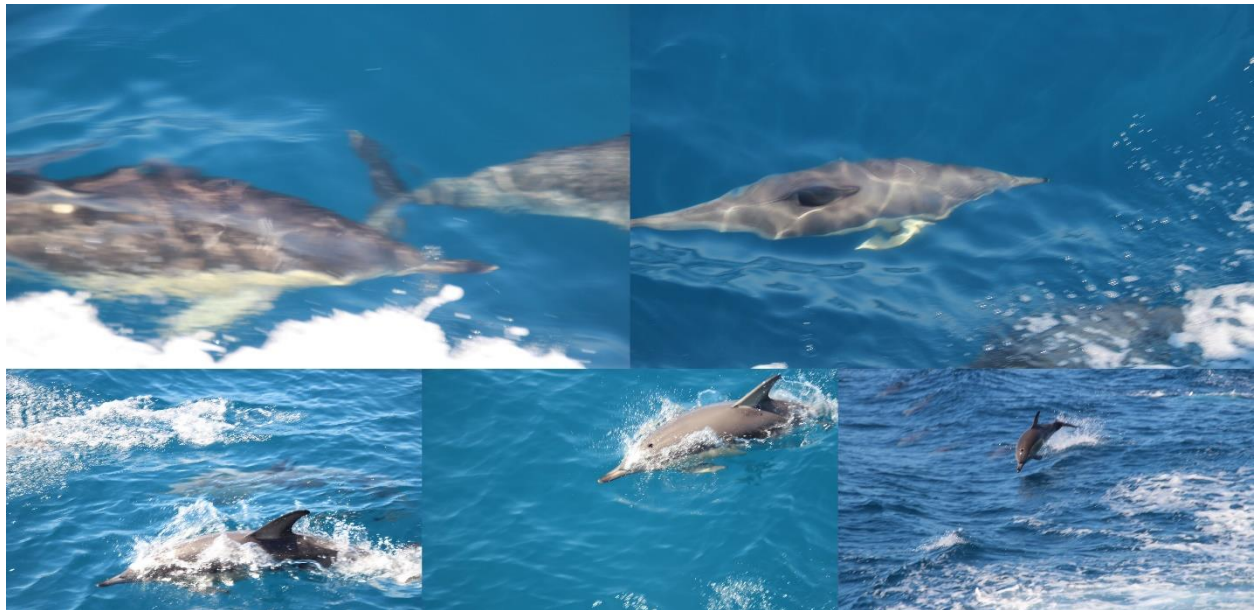
It's on down to Taupo to for a sight seeing visit. Stop at the lakeside. Have a coffee in one of the cafes close to the foreshore. We will visit the spectacular Huka Falls and you will have the option of jet boat rides and visiting the Huka Fresh Water Prawn Farm

From Taupo we head up the number 1 passing through our 4<sup>th</sup> largest city Hamilton followed by Auckland, stopping just north at the seaside resort of Orewa.

Motel – Waves 4 star Motel Orewa

Activities included    Huka Falls Viewing

**Optional Activities**    **Huka Falls Jet Boating**  
**Huka Prawn Farm**



**Day 4 Orewa to Kaitiaia**

We will visit the beautiful Whangarei Water Falls. A short 20 minute walk. From there its on to Paihia where you will board the 4 hour dolphin boat and hole in the rock cruise. You will disembark at the very historic Russell. New Zealand's second capital.

The Bay of Islands is not only spectacularly beautiful but steeped in heritage for New Zealand. The Northland region as such is where it is thought the Maori first landed as well as the Europeans. It is where in the 1800's the Treaty of Waitangi was signed between the various Maori Tribes and the European settlers.

Your tour vehicle will be waiting for you in Russell. From there we sightsee as we head north. Next stop will be the Puketi Kauri Forest. A spectacular display of our ancient Kauri Trees.

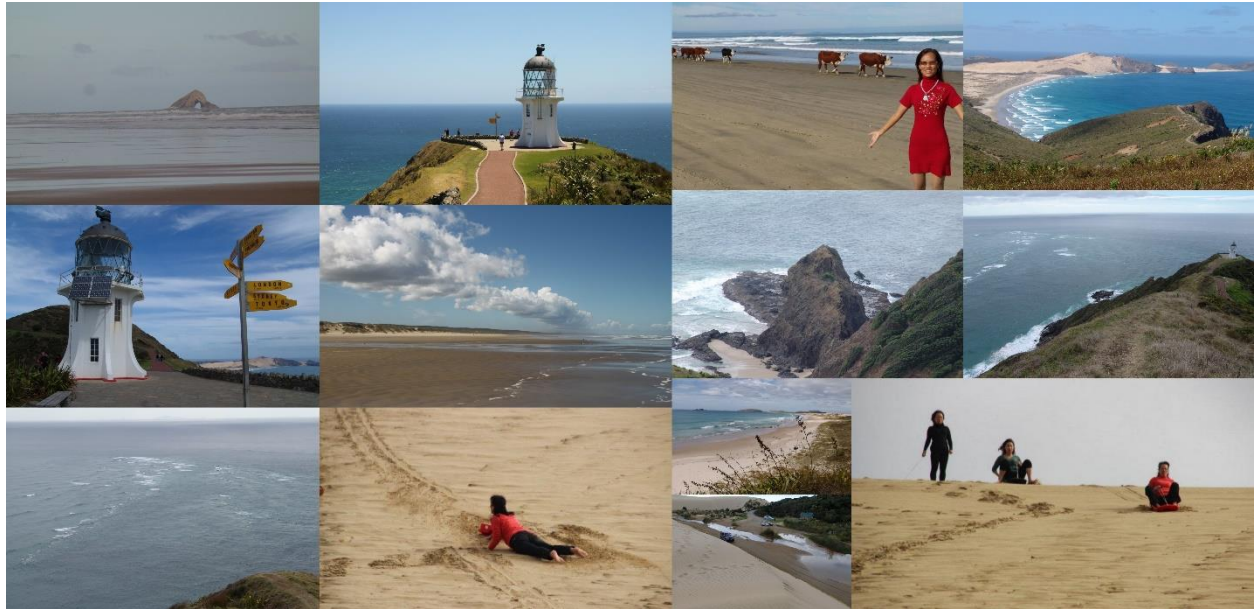




Then its on to Kaitaia where you stay for the next 2 nights.

Motel – Orana Motel or Northerner Hotel

Options included - Great Sights 4 hour Dolphin Boat/Hole in the Rock Cruise  
Puketi Forest Visit



**Day 5 Kaitaia to Cape Reinga via Ninety Mile Beach**

You will join the Harrison’s 4wd Beach Bus for a 7 hour tour to Cape Reinga and the lighthouse. The northern most point of the North Island of New Zealand reachable by road. You will travel the beautiful Te Paki Stream. There you have the opportunity to have a play on the sand boards sliding down the Te Paki Giant Sand Dunes. Then is on down the iconic Ninety Mile Beach. An experience you will not forget.





### **Day 6 Kaitaia to Auckland**

You will depart the far north travelling down the west coast. At Rawene you will cross on the vehicle ferry before heading for Opononi. A spectacular spot on the west coast of the far north. Then its on down to visit the famous Tane Mahuta. New Zealands largest tree somewhere between 1,250 and 2,500 years old. A magnificent tree.

From there we head down stopping at the Kauri Museum should you wish to visit. Then returning to Auckland

6 days of magic with Peter and Xiaoli Tours







**Peter and Xiaoli Tours – We tour New Zealand**