



Phone: +64 9 946 7227 Email: peterandxiaoli@gmail.com
www.peterandxiaoli.com

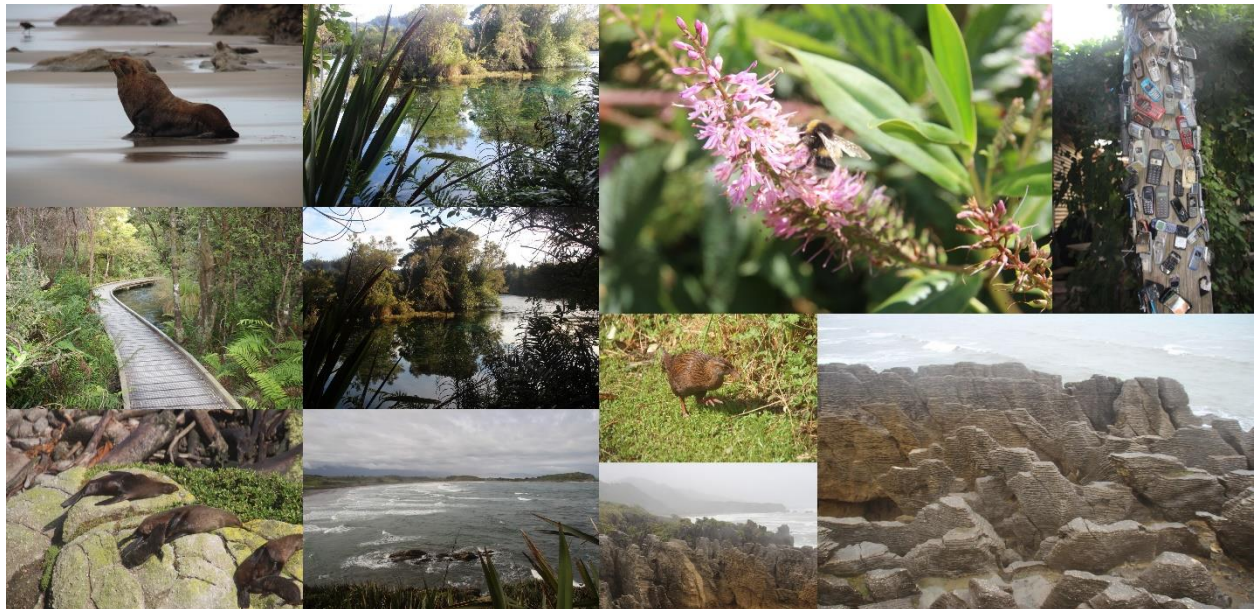
7 Day South Island

Day 1 Christchurch to Hanmer Springs

We take a relatively short drive from Christchurch to Hanmer Springs. At Hanmer Springs you will have the opportunity to take a soak in the hot mineral pools. Very inviting summer or winter

Motel – Hot Springs Motor Lodge

Activities included – Hanmer Springs Spa Pools



Day 2 Hanmer Springs to Franz Josef

A long day in travelling time but very spectacular. First we will head for Cape Foulwind on the west coast of the South Island just below Westport. There you will have the opportunity to do the short walk to view the seal colony and should you wish carry on walking a further 3km past the Cape Foulwind lighthouse where you will be met by your guide with the vehicle the other end.

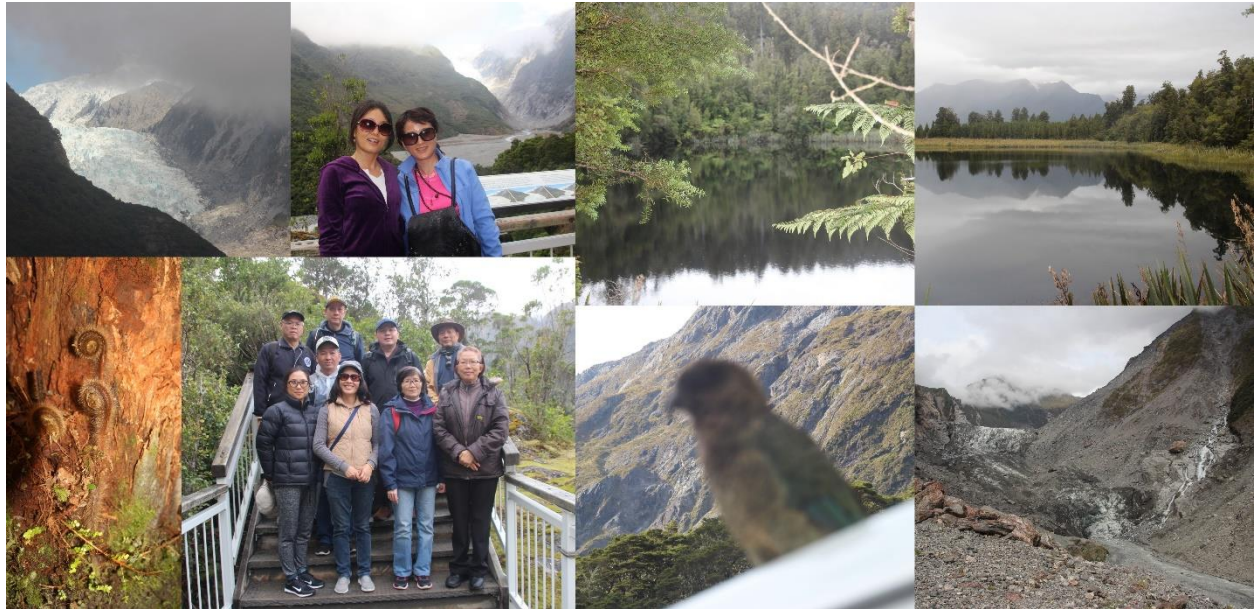
From Cape Foulwind its on to Punankaki and the famous Pancake Rocks. About a 20 minute walk dependent on how long you take for photography.



From there its on to Hokitika to visit a greenstone factory. Assuming the carvers are working you will get to see the greenstone being carved and polished.

Motel – Alpine Motel Franz Josef

Activities Included – Cape Foulwind Seal Colony, Pancake Rocks, Westland Greenstone Factory



Day 3 Franz Josef to Queenstown

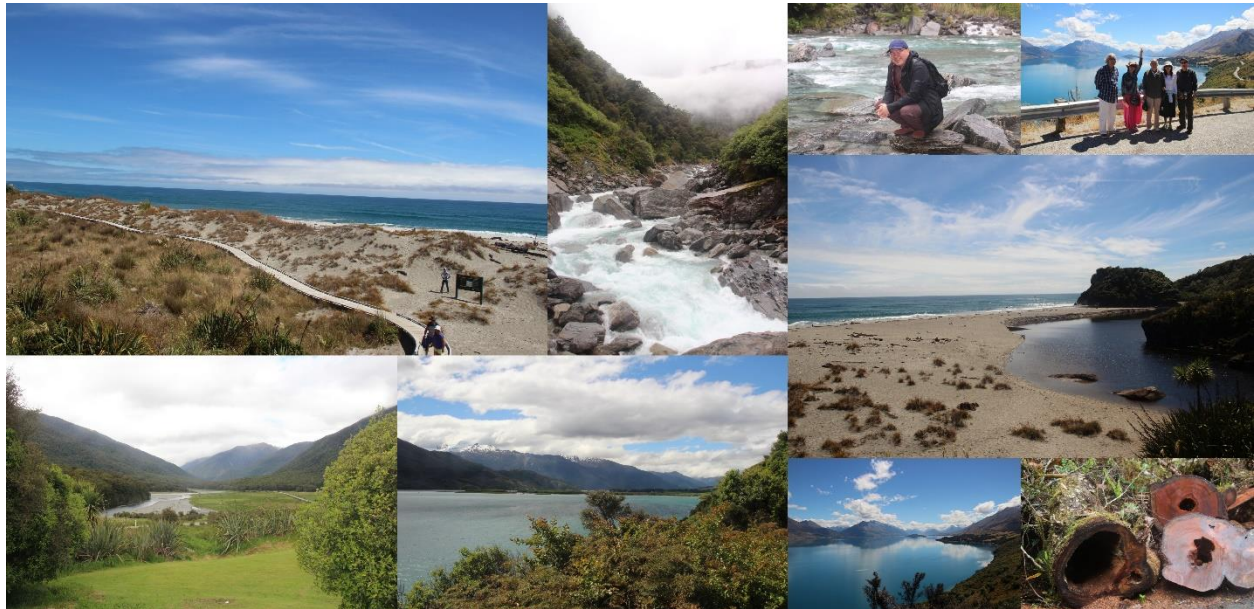
In the morning we walk to one of the 2 glaciers. Fox and Franz Josef. Or you can elect weather permitting to take the helicopter ride to land on the glacier.

Cameras will be working hard this day as we stop often heading down the west coast before turning inland at Haast and across to Wanaka then Queenstown.

Motel – Asure Gateway Queenstown

Activities included – Various walks including to glacier viewing platforms

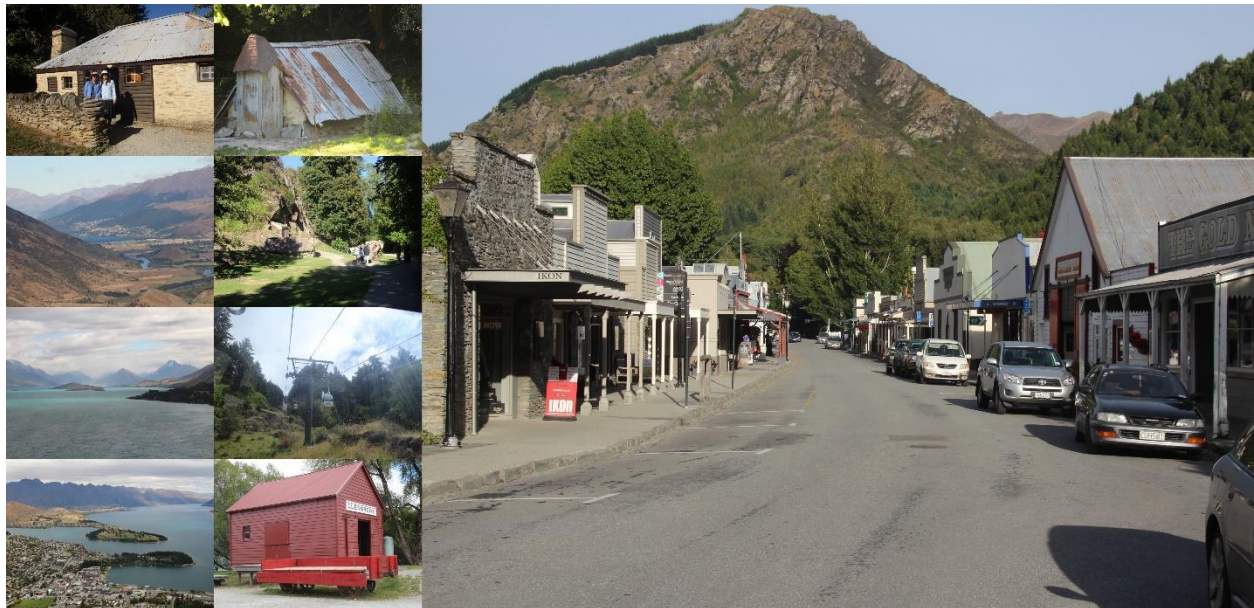
Optional activities – Glacier Helicopter Flights



Day 4 Queenstown to Te Anau

We spend most of the day in and around Queenstown before taking the 2 hour drive to Lake Te Anau. We will take time to visit the very historic gold mining settlement at Arrowtown.

Optional activities are many. Jet Boating, Bungy Jumping, Sky Diving, Lake Cruises, Sky Gondola and luges, Cycle Tracks



Te Anau we spend 2 nights as day 5 we dedicate to going to and from Milford Sounds including a cruise on the fiord.

Motel – Red Tussock Lakeside Motel

Optional Activity Te Anau Limestone Glow worm Caves



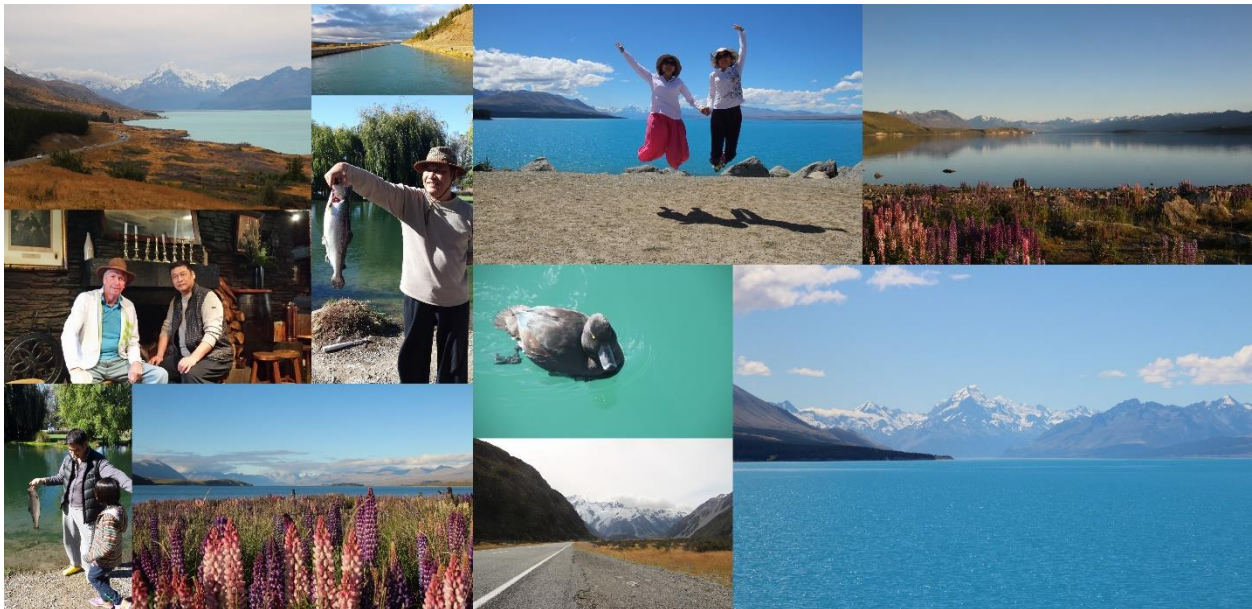
Day 5 Te Anau – Milford Sounds – Te Anau

It is not large driving hours but many stops in the Fiordland World Heritage Park for walks and photography. This is a day that you will never forget as you will be in awe of the breath taking scenery. Nature at its best.

Activity included – 1.5 hour cruise on the Milford Fiord

Day 6 Te Anau to Tekapo

We head from Te Anau up to the Mt Cook/Tekapo area. We travel much of the day through very baron high country tussock area. We will stop at the High Country Salmon farm where you can feed the salmon plus partake in some fresh salmon to take away or eat there



The night time skies if clear at Tekapo or Mt Cook are breath taking if you a star gazer.



If you are a fisherman you may wish to try your hand fishing for a salmon in the canals that has escaped from the salmon farms.

Motel to be advised

Activity included – High Country Salmon Farm



Day 7 Tekapo to Christchurch

Our final day. A 3 hour drive to Christchurch. Time for the farewells. If you have time before departure hopefully we can partake in a group lunch.



Peter and Xiaoli Tours – We Tour New Zealand